

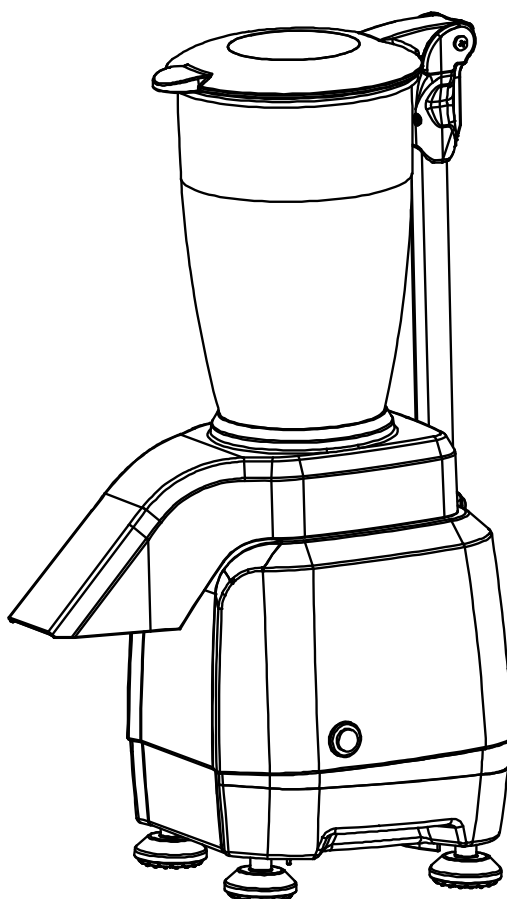


INSTRUCTION MANUAL

Original instructions for

ICE CRUSHER

08400300



Keep these instructions with the appliance.
You should read this user manual carefully before using the appliance.



Dear Customer,

Thank you for purchasing this appliance. Please take a few minutes before starting operation of the appliance and read the following operating instructions.

1. Intended use

- 1.1** This machine is designed for commercial use only and must not be used for household.
- 1.2** The appliance must only be used for the purpose for which it was intended and designed. Otherwise, it might lead to damage of the machine, property or personal injury.
- 1.3** The machine is intended for commercial and indoor use by trained and skilled personnel familiar with these instructions.

The machine body is mainly made in aluminum alloy and stainless steel for easy cleaning and maintenance. It has safety features compliant with the applicable safety Directives.

2 Safety regulations

2.1 Safety regulations

- 2.1.1** This appliance is intended for commercial use only and must not be used for household.
- 2.1.2** The appliance must only be used for the purpose for which it was intended and designed. The manufacturer is not liable for any damage caused by incorrect operation and improper use.
- 2.1.3** Keep the appliance and electrical plug away from water and any other liquids. In the event that the appliance should fall into water, immediately remove plug from the socket and do not use until the appliance has been checked by a certified technician. Failure to follow these instructions could cause a risk to lives.
- 2.1.4** Never attempt to open the casing of the appliance yourself.
- 2.1.5** Do not insert any objects in the casing of the appliance.
- 1.1.6** Do not touch the plug with wet or damp hands.
- 2.1.7** **Danger of electric shock!** Do not attempt to repair the appliance yourself. In case of malfunctions, repairs are to be conducted by qualified personnel only.
- 2.1.8** Never use a damaged appliance! Disconnect the appliance from the electrical outlet and contact the retailer if it is damaged.
- 2.1.9** Do not immerse the electrical parts of the appliance in water or other liquids. Never hold the appliance under running water.
- 2.1.10** Regularly check the power plug and cord for any damage. If the power plug or power cord is damaged, it must be replaced by a service agent or similarly qualified persons in order to avoid danger or injury.
- 2.1.11** Make sure the cord does not come in contact with sharp or hot objects and keep it away from open fire. To pull the plug out of the socket, always pull on the plug and not on the cord.



- 2.1.12** Ensure that the cord (or extension cord) is positioned so that it will not cause a trip hazard.
- 2.1.13** Always keep an eye on the appliance when in use.
- 2.1.14 Warning!** As long as the plug is in the socket the appliance is connected to the power source.
- 2.1.15** Turn off the appliance before pulling the plug out of the socket.
- 2.1.16** Never carry the appliance by the cord.
- 2.1.17** Do not use any extra devices that are not supplied along with the appliance.
- 2.1.18** Only connect the appliance to an electrical outlet with the voltage and frequency mentioned on the appliance label.
- 2.1.19** Connect the power plug to an easily accessible electrical outlet so that in case of emergency the appliance can be unplugged immediately. To completely switch off the appliance pull the power plug out of the electrical outlet.
- 2.1.20** Always turn the appliance off before disconnecting the plug.
- 2.1.21** Never use accessories other than those recommended by the manufacturer. Failure to do so could pose a safety risk to the user and could damage the appliance. Only use original parts and accessories.
- 2.1.22** This appliance is not intended for use by persons (including children) with reduced physical, sensory or mental capabilities, or lack of experience and knowledge.
- 2.1.23** This appliance must not be used by children under any circumstances.
- 2.1.24** Keep the appliance and its cord out of reach of children.
- 2.1.25** Always disconnect the appliance from the mains if it is left unattended or is not in use, and before assembly, disassembly or cleaning.
- 2.1.26** Never leave the appliance unattended during use.

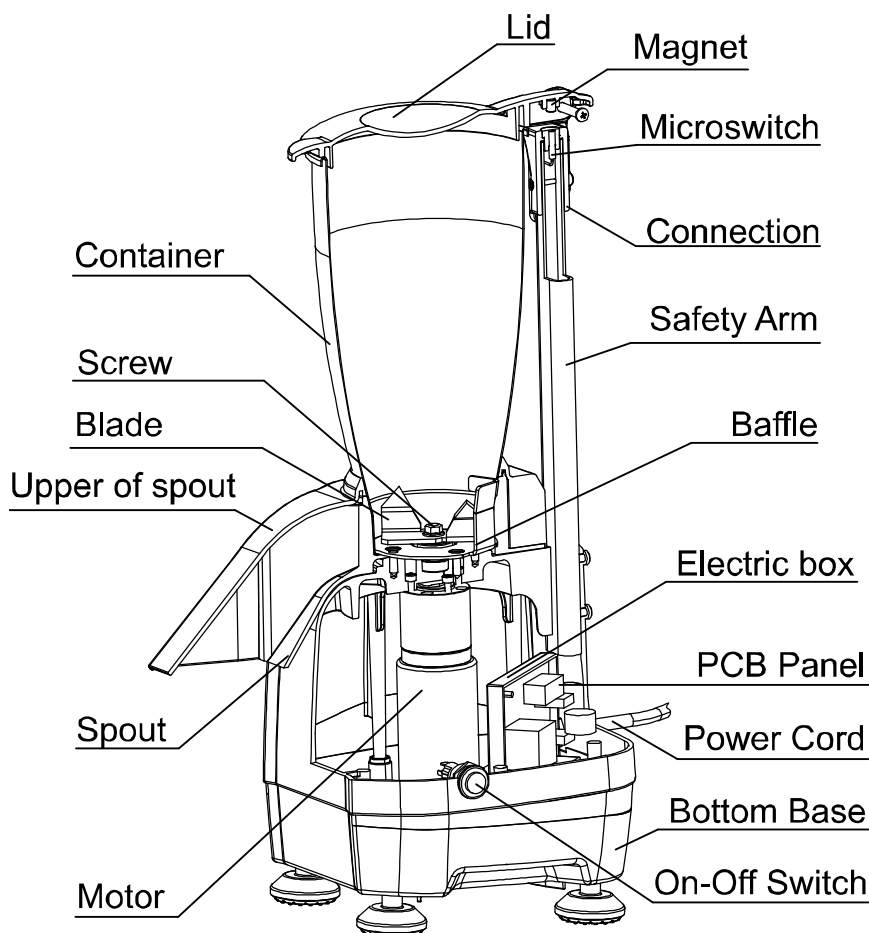
2.2 Special Safety Regulations

- 2.2.1** The appliance is intended for commercial and indoor use by trained and skilled personnel familiar with these instructions.
- 2.2.2** This machine is designed for ice crushing in restaurants, canteens and similar catering establishments.
- 2.2.3** Any other use might lead to damage to the appliance or personal injury.
- 2.2.4** Do not place the appliance on a heating object (gasoline, electric, charcoal cooker, etc.) Keep the appliance away from any hot surfaces and open flames. Always operate the appliance on a level, stable, clean, heat-resistant and dry surface.
- 2.2.5 Danger of injury!** Care is needed when operating or cleaning. Wear protective gloves (not supplied) if necessary.
- 2.2.6 Caution!** Securely route the power cord if necessary, in order to prevent unintentional tripping over and falling.
- 2.2.7** Do not use the appliance before it is properly assembled.
- 2.2.8** This appliance is not intended to be operated by means of an external timer or separate remote-control system.
- 2.2.9** Never bypass any safety interlocks on the appliance.
- 2.2.10 WARNING:** ALWAYS switch off the appliance and unplug from electrical power supply before cleaning, maintenance or storage.

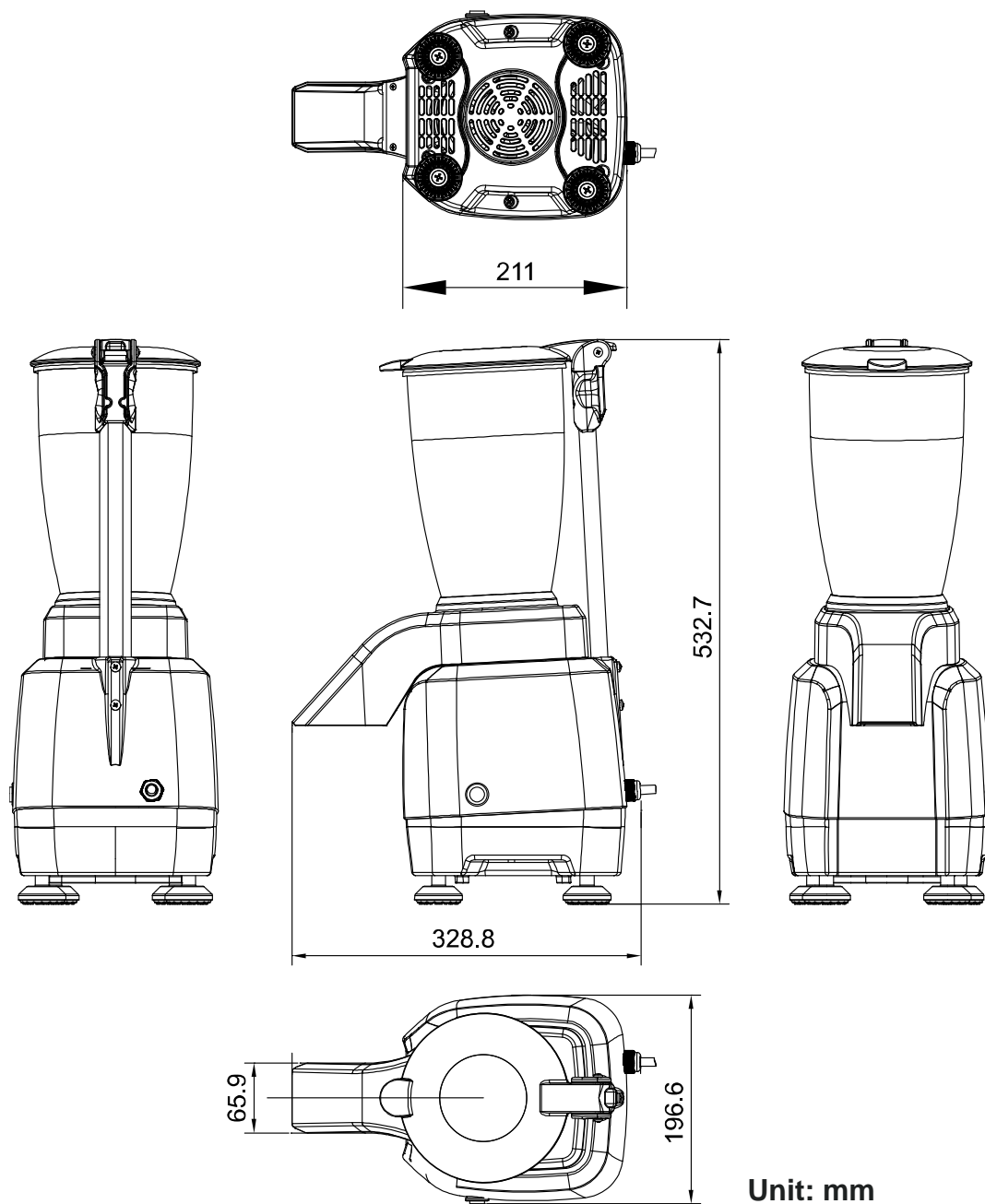
- 2.2.11 WARNING:** ALWAYS keep hands, long hair and clothing away from the moving parts.
- 2.2.12 WARNING:** Take great care when handling the cutting blade. Wear protective gloves (not supplied) if necessary.
- 2.2.13** Allow at least 15cm spacing around the appliance for ventilation purpose during use.
- 2.2.14** Do not wash the appliance with water or waterjet. Washing with water can cause leakage and increase the risk of electric shock. No parts are dishwasher safe.
- 2.2.15** Do not move the appliance while it is under operation. Unplug the appliance when moving and hold it at the bottom.
- 2.2.16** Special care should be taken when moving or transporting the appliance. Move the machine slowly, carefully.
- 2.2.17** This appliance is equipped with a cord having a grounding wire with a grounding plug, the plug must be plugged into an outlet that is properly installed and grounded.

3 PRODUCT DESCRIPTION

3.1 Parts of description



3.2 MAIN TECHNICAL PARAMETERS



Model	Voltage	Power	Capacity	N.W./G.W.	Packing Size
08400300	220V-240V~50/60Hz 110V-120V~ 60Hz	200W	3L	5.4/7.1 KG	38.5x25.5x58cm

4 INTRODUCTION

4.1 Preparation for first use

- 4.1.1** Check to make sure the appliance is undamaged. In case of any damage, contact your supplier immediately and do NOT use the appliance.



- 4.1.2 Remove all the packing material and protection film (if applicable). Keep the packaging for future storage.
- 4.1.3 Clean the appliance, see: **4.6 Cleaning**.
- 4.1.4 Place the appliance on a level and steady surface, unless mentioned otherwise.
- 4.1.5 Make sure there is enough clearance around the appliance for ventilation purposes.
- 4.1.6 Position the appliance in such a way that the plug is accessible at all times.
- 4.1.7 Make sure the power outlet ratings correspond to the specifications printed on the rating plate.
- 4.1.8 Make sure that the machine is connected to a grounding system.
- 4.1.9 Even if safety systems are installed on the machine, prevent approaching moving parts with hands and do not touch the machine with wet or damp hands.
- 4.1.10 It is strongly recommended that the operator contact the after sales center if there is any problem or malfunction occurred. Please do not dismantle the machine or in place of unauthorized parts.

4.2 The manufacturer will be not responsible for following cases:

- 4.2.1 If the machine is tampered with or safety functions are installed by non-authorized staff.
- 4.2.2 If the components are replaced by unauthorized parts.
- 4.2.3 If the instruction in this manual is not carefully followed.
- 4.2.4 If the machine surfaces are treated with unsuitable substance or solvent.

4.3 Safety devices

- 4.3.1 **Micro-switch**: The micro-switch is equipped with a magnet mechanism. The appliance stops automatically when the upper lid is opened during operation.
- 4.3.2 **Overcurrent protection switch** (Circuit breaker): The switch is designed to protect the electrical circuit from damage caused by excess current as a result of an overload or short circuit. The switch interrupts current flow after a fault is detected.
Note: To reset the machine, wait a few minutes till the motor cool down, then restart the machine.

4.4 INSTALLATION

4.4.1 Packing and unpacking

- 4.4.1.1 Remove all packaging materials. Keep the packaging for future storage.
- 4.4.1.2 Ensure the packages you received includes following items: ice crusher unit, instruction manual.



- 4.4.1.3 After unpacking all accessories, lay them on a flat and stable surface.
- 4.4.1.4 Make sure the delivery contents are complete and free of any damage. If you find that parts are missing or show damage, do not use the appliance but contact your dealer.
- 4.4.1.5 Clean the container, lid, spout and other parts which contact with ice.
BE CAREFUL: the blade is very sharp. (Use gloves if necessary, not included)
- 4.4.1.6 Position the appliance in such a way that the plug is always accessible.

4.4.2 Installation area

The selected machine work setting must be sufficiently lit and have an electric power outlet. The workplace must be sufficiently large, perfectly level and dry. The machine should be installed in non-explosive environments. In any case, installation should be carried out by taking into account any applicable industrial safety regulations in force.

4.4.3 Electric connection

DANGER-CAUTION: Electric connection to the power outlet should be operated by skilled personnel. Check for the perfect efficiency of the plant grounding system. Make sure that the line voltage (V) and frequency (Hz) correspond to the machine ratings (refer to the machine identification plate and wiring diagram). The machine comes equipped with an electric cable with plug. Plug the machine into a main wall switch with differential.

4.5 OPERATING AND SHARPENING

4.5.1 Operating

- 4.5.1.1 Make sure the switch is in "OFF" status.
 - 4.5.1.2 Open the lid.
 - 4.5.1.3 Place the ice cubes into the container.
 - 4.5.1.4 Close the lid so that the magnetic sensor is in contact with the end of the safety arm.
WARNING! Any attempt to by-pass the safety interlock and use the appliance without its lid may cause personal injury and /or damage to the appliance.
 - 4.5.1.5 Start the motor by pressing down the switch to "ON". Run the appliance to crush the ice in the container (It lasts about 30 seconds to finish crushing ice cubes in full container).
 - 4.5.1.6 Switch the motor off by pressing down the switch again.
- NOTE:** Always wait until all components have completely stopped before opening the lid.



4.6 Cleaning

4.6.1 It is important to keep the appliance clean and in good working condition to ensure optimum quality of the products and long life of the appliance.

4.6.2 The appliance is not to be cleaned with a water jet. Do not immerse the appliance in water or other liquids. Never hold the appliance under running water.

4.6.3 To clean the motor housing, unplug the appliance and clean with a damp cloth or alcohol, or use a generic spray detergent. Dry with a dry cloth.

4.6.4 To clean the container and the spout, unplug the appliance and clean the interior of the container with a warm water and washing liquid damp sponge. Rinse with a cold and damp sponge.

WARNING! BLADES ARE SHARP. Clean with care!

4.7 Storage

4.7.1 Before reassembling, make sure that all parts are dry. Before storing, remove all residues from the appliance (incl. the basins), disconnect it from the supply and clean the appliance and its accessories thoroughly. Use white Vaseline oil (or any similar product) to protect all parts of the device.

4.7.2 To protect the appliance from dust, cover it with a cloth that allows air circulation inside the appliance.

5 Troubleshooting

In case of failures or malfunctions, always unplug the appliance immediately.

Only perform the steps described in this instruction manual! All further inspection, maintenance and repair work must be performed by an authorized service center or a similarly qualified specialist.

In case of a fire, use a powder extinguisher with superfine powder.

If you are unable to solve the problem listed the table below, contact an authorized service center.

We are not liable for any damaged caused by repairs not made correctly by unauthorized personnel.

In these cases, the warranty does not apply.



Problem	Solution
The ice crusher does not start.	<ol style="list-style-type: none">1. Make sure it is plugged in.2. Make sure the safety circuit breaker is closed.3. Make sure the switch is turned to ON.4. If the problem occurs after a long period of intensive use, the motor may have overheated. Wait at least 30 minutes and try again. If you put the appliance in a cool place, this will reduce the waiting time.

6 Disposal

WEEE Waste of Electric and Electronic



Equipment

Directive 2002/95/EC, 2002/95/EC and 2003/108/EC on the restriction of the use of certain hazardous substances in electrical and electronic equipment, and waste electrical and electronic equipment

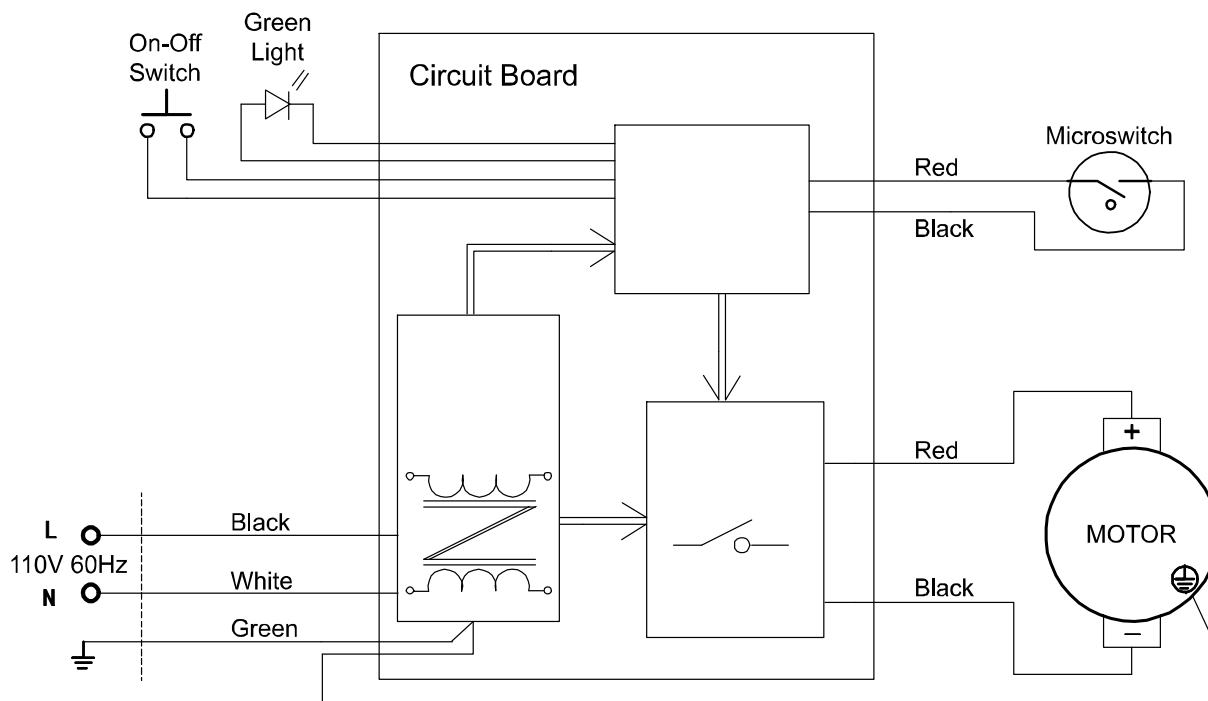
This symbol, crossed out wheeled bin, on the product or on its packaging indicates that this product must not be disposed of with your other household waste.

Separate waste collection of this appliance is organized and managed by the manufacturer. It is the user's responsibility to contact the manufacturer and follow the waste treatment system the manufacturer has adopted for separate waste collection.

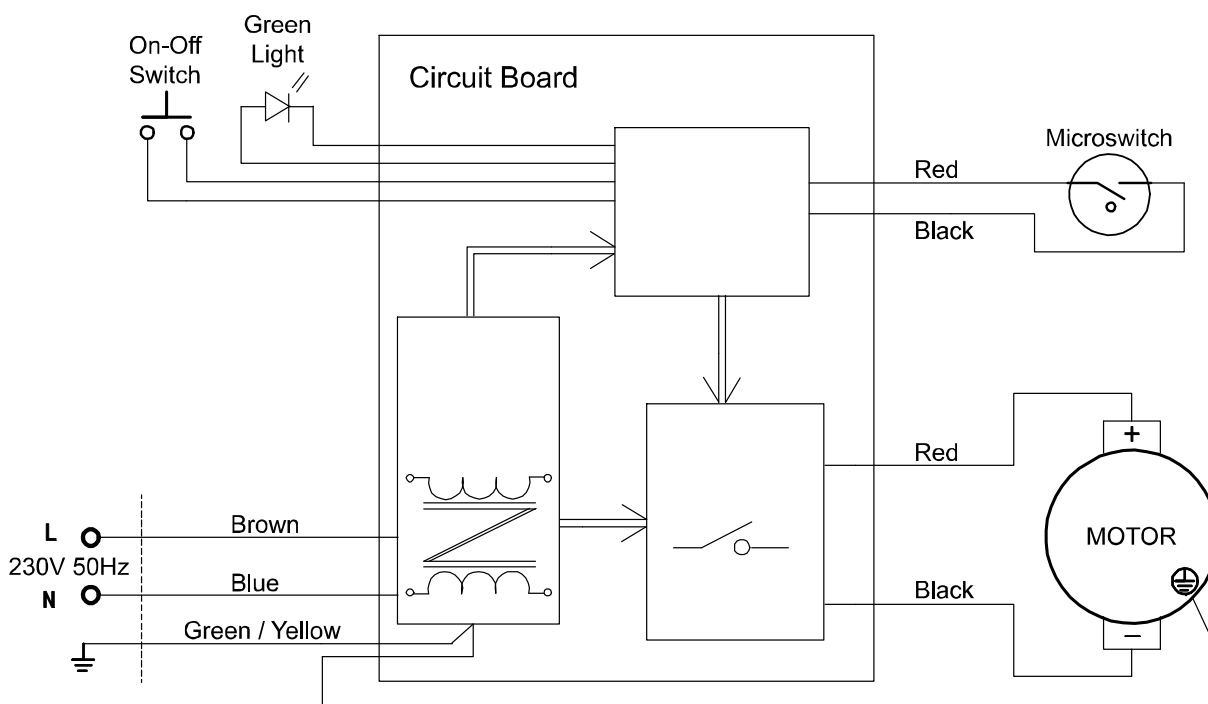
The separate collection and recycling of your waste equipment at the time of disposal will help to conserve natural resources and ensure that it is recycled in a manner that protects human health and the environment.

7 Circuit diagram

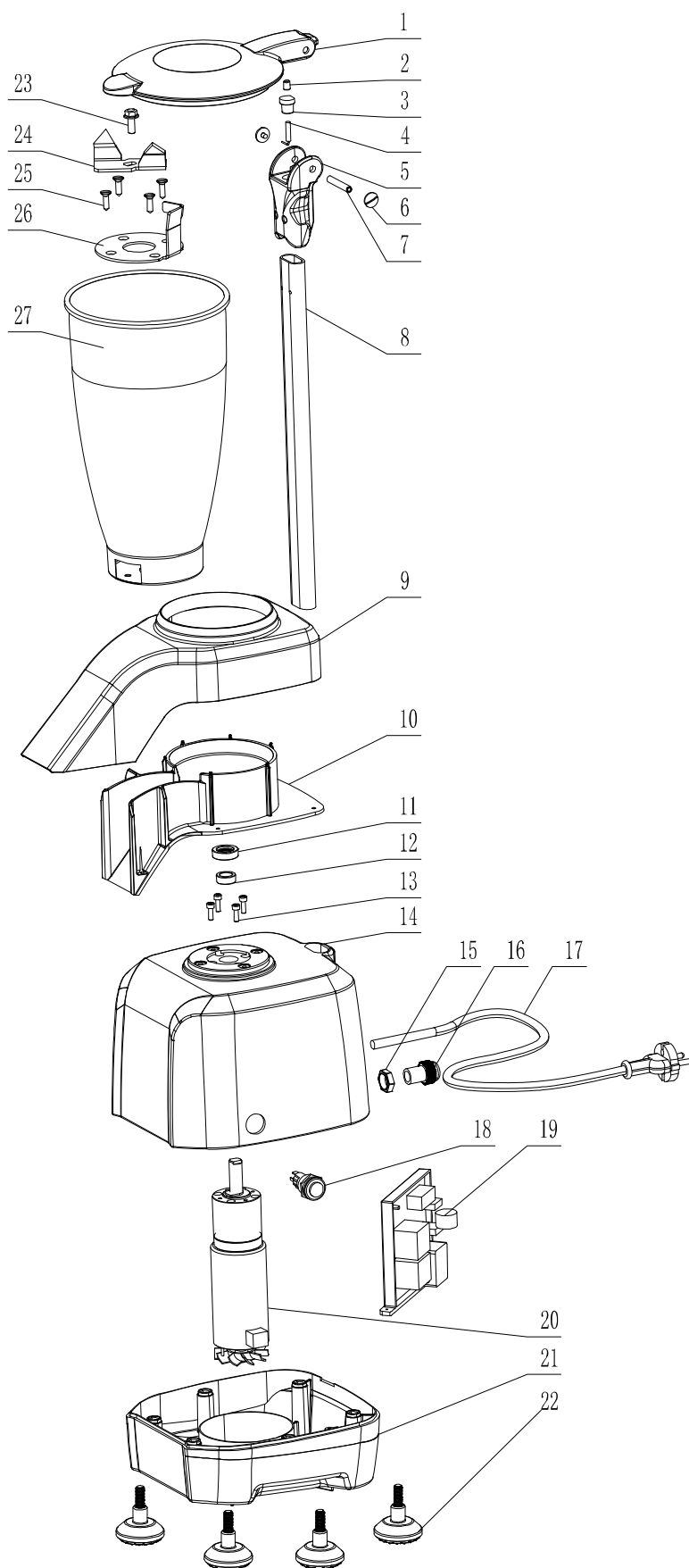
110V~ 60Hz



230V~ 50Hz



8 Exploded view and spare parts lists



No.	Name
1	Lid
2	Magnet
3	Cover
4	Microswitch
5	Connection
6	Screw
7	Sleeve
8	Safety arm
9	Upper of spout
10	Spout
11	Oil seal
12	Steel sheath
13	Screw
14	Motor upper cover
15	Cable tie
16	
17	Power cord
18	On-Off switch
19	Circuit board
20	Motor
21	Bottom base
22	Rubber feet
23	Screw
24	Blade
25	Screw
26	Baffle
27	Container